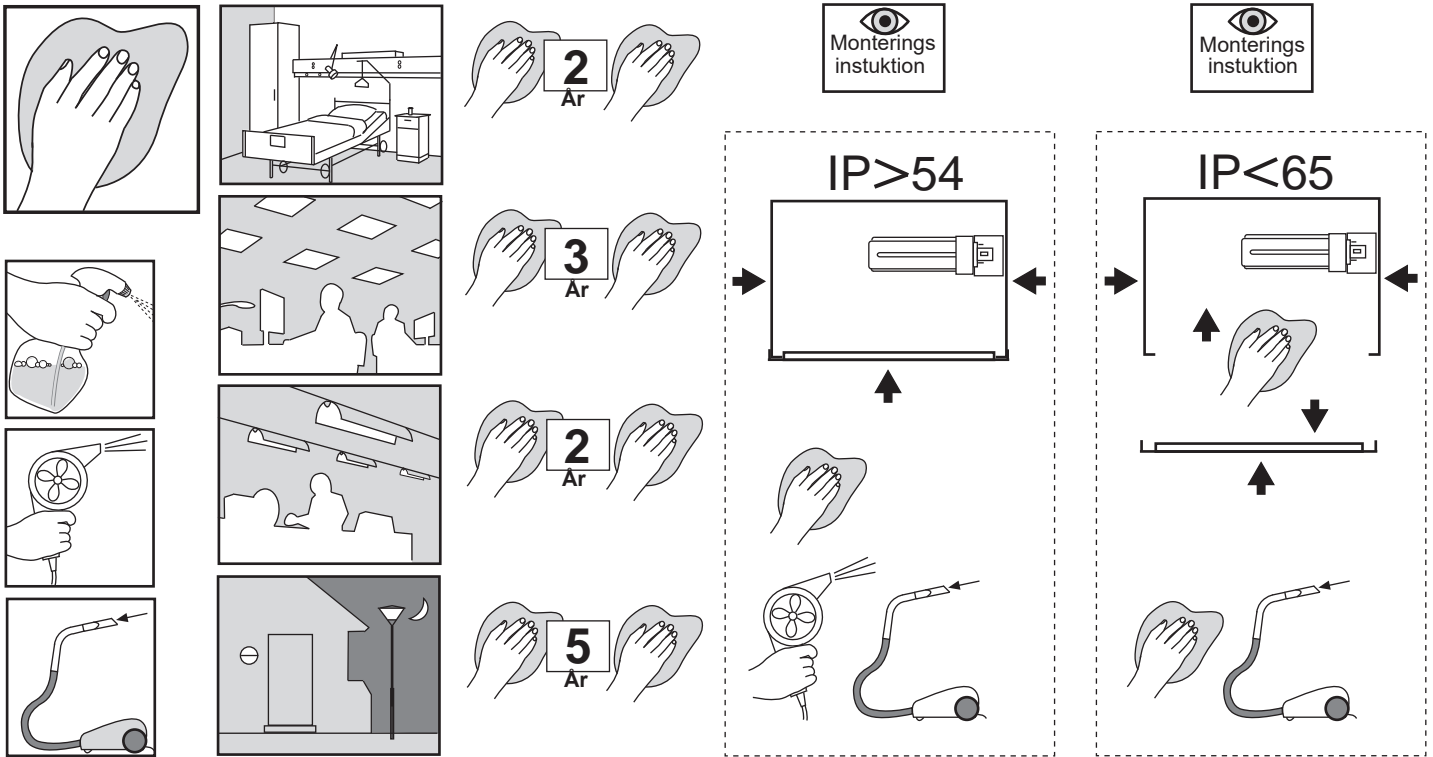
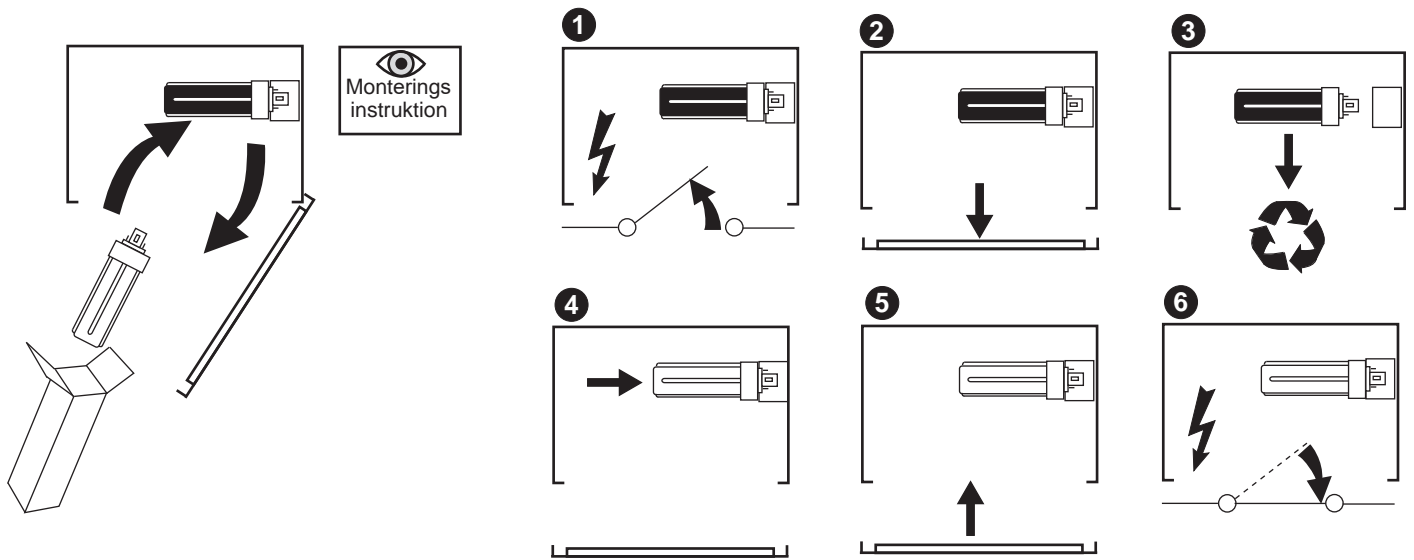
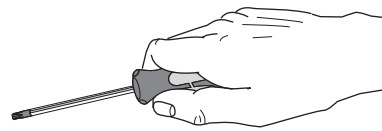
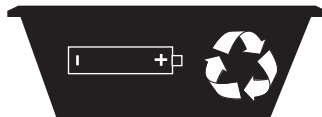
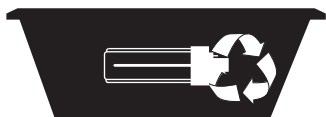
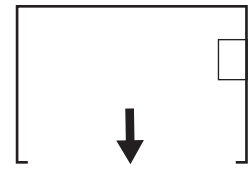
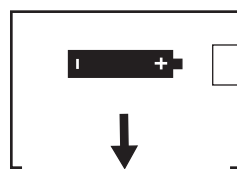
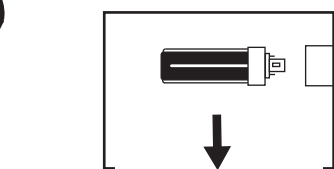


FAGERHULT

SE - 566 80 Habo



Monterings instruktion



RENGØRINGSINSTRUKTION TIL BELYSNINGSARMATURER

Rengøring af armaturer skal normalt ske i henhold til den fastlagte vedligeholdelsesplan. Reflekterende flader bør rengøres, når støv og anden forurening opleves.

Vigtigt at huske på:

Ved rengøring af armaturhuse skal spændingen altid afbrydes. Elektriske komponenter eller kabler må ikke udsættes for rengøringsmidler eller vand.

Ved vask af blanke overflader (reflektorer og afskærmning) skal der tages højde for følgende for at få et godt resultat:

- Brug rene bomuldsvanter ved håndtering af dele, der skal rengøres.
- Rene omgivelser. Dermed undgås forurening efter afvaskning.
- Brug rene (ikke-pudrede) latexhandsker for at undgå fingeraftryk under afvaskning.
- Skyl altid overfladerne med rigeligt lunkent vand inden afvaskning for at undgå ridser.
- Vask med bløde rene universalklude uden mikrofiber (mikrofiber kan i visse tilfælde forårsage ridser) eller bomuldsklude. Skift vand og klude ofte!
- Reflektorer kan let tørres af med rengøringskind, mens afskærmning skal blæses tør med trykluft. Ved selvtørring kan der (afhængigt af vandets kvalitet) opstå tørre pletter. I disse tilfælde bør der tilsættes afspændingsmiddel i skyllevandet.
- Der findes mange forskellige vaskemidler på markedet, der egner sig til formålet. Derfor kan vi ikke give en komplet liste.

	Rengøring – normalt snavs	Rengøring – genstridigt snavs (olie, fedt, fingeraftryk)	Tørring
Armaturhuse			
Lakerede Aluzink Aluminium	<ul style="list-style-type: none"> • Støvsugning med blød børste. • Neutralt opvaskemiddel i lunkent vand. • Aftør med let fugtet universalrengøringsklud. 	<ul style="list-style-type: none"> • Universalrengøringsmiddel uden ætsende eller slibende effekter, i lunkent vand. • Aftør med let fugtet universalrengøringsklud. 	<ul style="list-style-type: none"> • Aftørring med blødt, rent rengøringskind eller bomuldsklud. • Selvtørring ved stuetemperatur.
Messing Kobber Krom Poleret aluminium	<ul style="list-style-type: none"> • Støvaførring med blød ren bomuldsklud. • Støvsugning med blød børste. • Afbløsning med trykluft. • Neutralt opvaskemiddel i lunkent vand. • Aftør med let fugtet universalrengøringsklud. 	<ul style="list-style-type: none"> • Universalrengøringsmiddel uden ætsende eller slibende effekter, i lunkent vand. • Aftør med let fugtet universalrengøringsklud. 	<ul style="list-style-type: none"> • Aftørring med blødt, rent rengøringskind (uden mikrofiber) under meget let tryk. • Selvtørring ved stuetemperatur.
Naturligt kobber	<p>Naturligt kobber oxiderer, når det ældes. Dette skaber en naturlig patina, der ikke bør poleres af. Naturligt kobber er kemikaliebestandigt over for alle typer af rengøringsmiddel. Brug lunkent vand, og aftør med let fugtet universalrengøringsklud.</p>		<ul style="list-style-type: none"> • Aftørring med blødt, rent rengøringskind eller bomuldsklud. • Selvtørring.
ABS PC PMMA PP	<ul style="list-style-type: none"> • Støvsugning med blød børste. • Afbløsning med trykluft. • Neutralt opvaskemiddel i lunkent vand. • Aftør med let fugtet universalrengøringsklud. 	<ul style="list-style-type: none"> • Universalrengøringsmiddel uden ætsende eller slibende effekter, i lunkent vand. • Aftør med let fugtet universalrengøringsklud. 	<ul style="list-style-type: none"> • Aftørring med et blødt, rent rengøringskind (uden mikrofiber) eller en bomuldsklud under meget let tryk. • Selvtørring.
Reflektorer			
Højblankt, halvblankt metalliseret aluminium. Metalliseret plast	<ul style="list-style-type: none"> • Afbløsning med trykluft. • Skyl grundigt med lunkent vand inden afvaskning. Brug neutralt opvaskemiddel med en pH-værdi på ca. 7 i lunkent vand. • Afvask let med en blød, ren universalklud (uden mikrofiber) i rigeligt vand. Skift vand og klud ofte. • Skyl grundigt med lunkent vand. 	<ul style="list-style-type: none"> • Skyl grundigt med lunkent vand inden afvaskning. Brug universalrengøringsmiddel uden ætsende eller slibende effekt, i varmt vand (40-50 °C). • Afvask let med en blød, ren universalklud (uden mikrofiber) i rigeligt vand. Skift vand og klud ofte. • Skyl grundigt med lunkent vand. 	<ul style="list-style-type: none"> • Afbløsning med trykluft. • Aftørring med blødt, rent rengøringskind (uden mikrofiber) under meget let tryk. • Selvtørring ved stuetemperatur. <i>(Afhængigt af vandets kvalitet kan der forekomme tørre pletter).</i>
Afskærmning			
Lakerede overflader Højblankt, halvblankt metalliseret aluminium	<ul style="list-style-type: none"> • Støvsugning med blød børste. • Afbløsning med trykluft. • Skyl grundigt med lunkent vand inden afvaskning. Brug neutralt opvaskemiddel med en pH-værdi på ca. 7 i lunkent vand. • Afvask let med en blød, ren universalklud (uden mikrofiber) i rigeligt vand. Skift vand og klud ofte. • Skyl grundigt med lunkent vand. 	<ul style="list-style-type: none"> • Skyl grundigt med lunkent vand inden afvaskning. Brug universalrengøringsmiddel uden ætsende eller slibende effekt, i varmt vand (40-50 °C). • Afvask let med en blød, ren universalklud (uden mikrofiber) i rigeligt vand. Skift vand og klud ofte. • Skyl grundigt med lunkent vand. 	<ul style="list-style-type: none"> • Afbløsning med trykluft. • Aftørring med blødt, rent rengøringskind (uden mikrofiber) under meget let tryk. • Selvtørring ved stuetemperatur. <i>(Afhængigt af vandets kvalitet kan der forekomme tørre pletter).</i>
PMMA	<ul style="list-style-type: none"> • Støvsugning med blød børste. • Afbløsning med trykluft. • Neutralt opvaskemiddel i lunkent vand. • Aftør med let fugtet universalrengøringsklud. 	<ul style="list-style-type: none"> • Universalrengøringsmiddel uden ætsende eller slibende effekter, i lunkent vand. • Aftør med let fugtet universalrengøringsklud. 	<ul style="list-style-type: none"> • Aftørring med et blødt, rent rengøringskind (uden mikrofiber) eller en bomuldsklud under meget let tryk. • Selvtørring.
Plastkugler			
PC PMMA PP	<ul style="list-style-type: none"> • Afbløsning med trykluft. • Neutralt rengøringsmiddel i varmt vand, maks. 55 °C. Afvask let med en blød, ren universalklud (uden mikrofiber) i rigeligt vand. • Skyl grundigt med lunkent vand. 	<ul style="list-style-type: none"> • Brug universalrengøringsmiddel uden ætsende eller slibende effekt, i varmt vand, maks. 55 °C. • Afvask let med en blød, ren universalklud (uden mikrofiber) i rigeligt vand. • Skyl grundigt med lunkent vand. 	<ul style="list-style-type: none"> • Afbløsning med trykluft. • Aftørring med et blødt, rent rengøringskind (uden mikrofiber) eller en bomuldsklud under meget let tryk. • Selvtørring ved stuetemperatur.

LUMINAIRE CLEANING INSTRUCTION

Luminaires should normally be cleaned according to the defined maintenance plan. Reflective surfaces ought to be cleaned when dust and other grime is discovered.

Please notice:

Electrical components or cabling must not be exposed to cleaning agent or water. It is important to always disconnect the voltage before cleaning the luminaire body.

At the washing of specular surfaces (reflectors and louvres) the following should be taken under consideration to ensure a good result:

- Use clean cotton gloves when handling parts to be cleaned.
- A clean environment. This is to avoid contamination after washing.
- Use clean (not powdered) latex gloves to avoid fingerprints during washing.
- Rinse all surfaces with plenty of lukewarm water before cleaning to avoid scratches.
- Wash with a soft clean cleaning cloth, without micro fiber (micro fibers may in some cases cause scratches) or cotton cloth. Change the water and cloths often!
- Reflectors can be lightly wiped with cleaning leather, while louvres should be blown dry with compressed air.
- At self drying can (depending on water quality) drying spots occur. Tension funds should then be added in the rinsing water.
- There are a variety of detergents on the market that are suitable for use. Therefore, we can not provide a complete list.

	Normally fouled – cleaning approaches	Very fouled (oil, grease, fingerprints) – cleaning approaches	Drying approaches
Bodies			
Enamelled	• Vacuum with soft brush.	• Use detergent (without bate effect or abrasive effect) in lukewarm water. Clean with damp cleaning cloth.	• Wipe with a dry, soft and clean cleaning cloth or cotton cloth. • Let it dry by itself, at room temperature.
Aluzink Aluminium	• Use neutral detergent in lukewarm water. Clean with damp cleaning cloth.		
Brass	• Dust with a soft and clean cotton cloth.	• Use detergent (without bate effect or abrasive effect) in lukewarm water. Clean with damp cleaning cloth.	• Wipe with a dry, soft and clean cleaning cloth (without microfibre) with a gentle touch. • Let it dry by itself, at room temperature.
Copper	• Vacuum with soft brush.		
Chromium	• Blow dust off with compressed air.		
Burnished aluminium	• Use neutral detergent in lukewarm water. Clean with damp cleaning cloth.		
Natural copper	Natural copper oxidizes when aging. This creates a natural patina which shouldn't be polished. Natural copper is chemical resistant to detergents. Use lukewarm water and clean with damp cleaning cloth.		• Wipe with a dry, soft and clean cleaning cloth or cotton cloth. • Let it dry by itself.
ABS	• Vacuum with soft brush.	• Use detergent (without bate effect or abrasive effect) in lukewarm water. Clean with damp cleaning cloth.	• Wipe with soft, clean cleaning cloth (without microfibre) or cotton cloth with a gentle touch. • Let it dry by itself.
PC	• Blow dust off with compressed air.		
PMMA	• Use neutral detergent in lukewarm water. Clean with damp cleaning cloth.		
PP			
Reflectors			
Anodised aluminium, matt or specular.	• Blow dust off with compressed air. • Rinse carefully with lukewarm water before cleaning. Use neutral detergent with pH 7 in lukewarm water. Clean gently with a soft and clean cleaning cloth (without microfibre) and plenty of water. Change water and cloth often. Rinse carefully with lukewarm water.	• Rinse carefully with lukewarm water before cleaning. Use detergent (without bate effect or abrasive effect) in warm water (40-50°C). Clean gently with a soft and clean cleaning cloth (without microfibre) and plenty of water. Change water and cloth often. Rinse carefully with lukewarm water.	• Dry with compressed air. • Wipe with a dry, soft and clean cleaning cloth (without microfibre) with a gentle touch. • Let it dry by itself, at room temperature. <i>(Note: After drying spots can occur, depending on water quality)</i>
Metallised PC			
Metallised			
Louvres			
Enamelled surfaces.	• Vacuum with soft brush.	• Rinse carefully with lukewarm water before cleaning. Use detergent (without bate effect or abrasive effect) in warm water (40-50°C). Clean gently with a soft and clean cleaning cloth (without microfibre) and plenty of water. Change water and cloth often. Rinse carefully with lukewarm water.	• Dry with compressed air. • Wipe with a dry, soft and clean cleaning cloth (without microfibre) with a gentle touch. • Let it dry by itself, at room temperature. <i>(Note: After drying spots can occur, depending on water quality)</i>
Anodised aluminium, matt or specular.	• Blow dust off with compressed air. • Rinse carefully with lukewarm water before cleaning. Use neutral detergent with pH 7 in lukewarm water. Clean gently with a soft and clean cleaning cloth (without microfibre) and plenty of water. Change water and cloth often. Rinse carefully with lukewarm water.		
PMMA	• Vacuum with soft brush. • Blow dust off with compressed air. • Use neutral detergent in lukewarm water. Clean with damp cleaning cloth.	• Use detergent (without bate effect or abrasive effect) in lukewarm water. Clean with damp cleaning cloth.	• Wipe with soft, clean cleaning cloth (without microfibre) or cotton cloth with a gentle touch. • Let it dry by itself.
Plastic covers			
PC	• Blow dust off with compressed air.	• Use neutral detergent (without bate effect or abrasive effect) in warm water, max 55°C. Wash gently with a soft and clean cloth (without microfibre) and plenty of water. Rinse with lukewarm water.	• Dry with compressed air. • Wipe with soft, clean cleaning cloth (without microfibre) or cotton cloth with a gentle touch. • Let it dry by itself, at room temperature.
PMMA	• Use neutral detergent in warm water, max 55°C.		
PP	Wash gently with a soft and clean cleaning cloth (without microfibre) and plenty of water. Rinse with lukewarm water.		